



**UNIVERSITY OF LEEDS**

## **CANDIDATE BRIEF**

**Lecturer in Management Consulting (Teaching & Scholarship), Leeds University Business School**



**Salary: Grade 8 (£39,324 - £46,924 p.a.)**

**Reference: LUBSC1201**

**Closing date 26 March 2017**

**Interviews are expected to be held on Friday 21 April 2017**



# **Lecturer in Management Consulting (Teaching and Scholarship)**

## **Work and Employment Relations Division (WERD)**

### **Leeds University Business School**

**Do you have the ability to motivate and inspire learners? Do you have a clear commitment to creating and delivering an excellent student experience? Are you an experienced teacher with a PhD or near completion in management consulting, professional services, knowledge work or HRM?**

As Lecturer, you will provide effective and innovative research led teaching and demonstrate a potential to lead pedagogical thinking and developments in the fields of management consulting, professional services, knowledge work and HRM at a national or international level. You will play a leading role in delivering the MSc in Management Consulting, run by the WERD division. You will support the delivery and development of this programme, forging external links with external business partners which will also support the Division's impact research agenda and further your own international scholarship.

Leeds University Business School (LUBS) is a leading international business school and a strong research intensive Faculty of the University of Leeds. It holds a '5' rating for international excellence in research, and accreditation from EQUIS and AMBA. The Work & Employment Relations Division (WERD) seeks staff with experience of teaching and supporting students who will contribute to the Division's teaching programmes.

## **What does the role entail?**

As a Lecturer your main duties will include:

- Undertaking research led teaching in Management Consulting and other areas, at all levels, including collecting, and responding to, student feedback and the provision of timely assessment and feedback;
- Playing a significant role in the design, development, planning and review of modules and programmes;



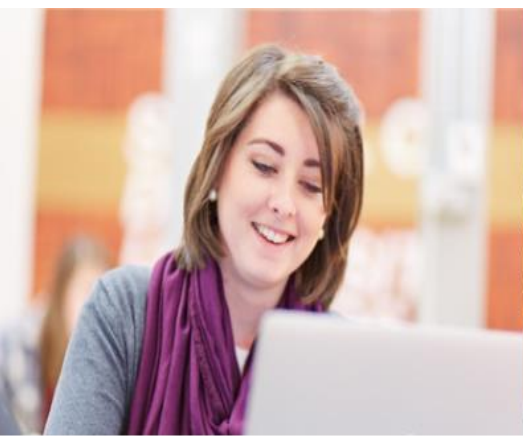
- Working with our students as members of a learning community to provide world class education and an excellent student experience;
- Maintaining and enhancing standards of student attainment at both undergraduate and postgraduate levels;
- Ensuring processes such as programme delivery, admissions and quality assurance are delivered effectively to enhance the student experience;
- Developing and utilising innovative approaches to teaching and learning;
- Providing support and guidance to students, acting as a personal tutor, resolving and/or referring to specialist parties as appropriate;
- Developing a portfolio of scholarship activities and engaging with scholarship opportunities both internally and externally to the University;
- Contributing effectively to the administrative process and committee structures of the Faculty and as appropriate the wider University.

These duties provide a framework for the role and should not be regarded as a definitive list. Other reasonable duties may be required consistent with the grade of the post.

## What will you bring to the role?

As a Lecturer you will have:

- A PhD or close to completion in Management, Human Resource Management or Sociology of Work/Professions;
- Experience of teaching in a University environment,
- Ability to interact with students to enhance the student experience;
- Teaching that reflects professional development and engagement with the relevant discipline;
- Experience of providing support and guidance to students ;
- Ability to participate in scholarly academic engagement relevant to the field;
- Ability to build and establish effective working relationships ;
- A high level of interpersonal and communication skills;
- Demonstrable creativity and the ability to inspire others;



- The ability to work under pressure and deal with conflicting demands.

You may also have:

- A PhD in a business related field;
- Experience of teaching management consulting in a University environment
- Commercial experience and/or links with commercial organisations;
- Ability to build partnerships with industrial, professional and public sector organisations.

## How to apply

You can apply for this role online; more guidance can be found on our [How to Apply](#) information. Applications should be submitted by 23.59 (UK time) on the closing date.

Your application should include:

- a **supporting statement** evidencing how you believe your existing knowledge and experience equips you to carry out the role;
- a copy of your **curriculum vitae** giving full details of qualifications and experience.

## Contact information

To explore the post further or for any queries you may have, please contact:

**Professor Christopher Forde**

Tel: 0113 343 2619

Email: [C.J.Forde@lubs.leeds.ac.uk](mailto:C.J.Forde@lubs.leeds.ac.uk)

## Additional information

### Leeds University Business School

[Leeds University Business School](#) are a leading full-service business school and are world ranked by the Financial Times for our MBA, Masters in Finance and Masters in Management programmes, making us one of the most influential schools in Europe. We are proud to hold the 'Triple Crown' accreditations from AACSB, AMBA and EQUIS, placing us in the top 1% of business schools globally.





Find out more about the [Centre for Employment Relations, Innovation and Change](#) as well as the [Work and Employment Relations Division \(WERD\)](#)

### **Working at Leeds**

You can find out more about our generous benefits package and more about what it is like to work at the University and live in the Leeds area in our [Working at Leeds](#) information.

### **Candidates with disabilities**

Information for candidates with disabilities, impairments or health conditions, including requesting alternative formats, can be found in our [Accessibility](#) information or by getting in touch with us at [disclosure@leeds.ac.uk](mailto:disclosure@leeds.ac.uk).

### **Criminal record information**

#### **Rehabilitation of Offenders Act 1974**

A criminal record check is not required for this position. However, all applicants will be required to declare if they have any 'unspent' criminal offences, including those pending.

Any offer of appointment will be in accordance with our Criminal Records policy. You can find out more about required checks and declarations in our [Criminal Records](#) information page.

